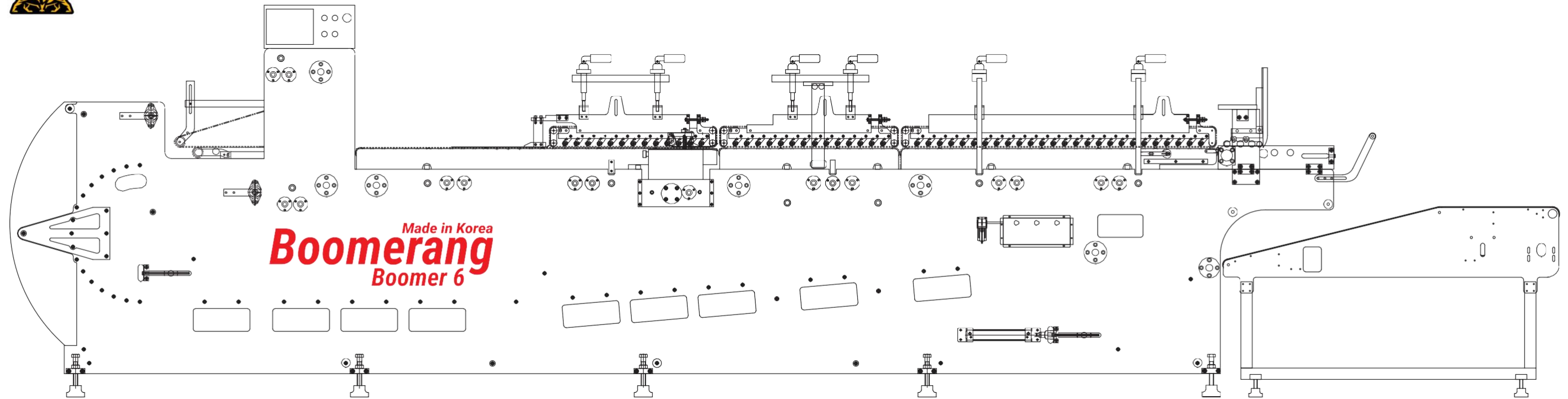


Boomerang

The Returning Folder Gluer



**Save Costs & Space !
High Productivity !**



6.9 m

Main Features / *as optional



Main Controller



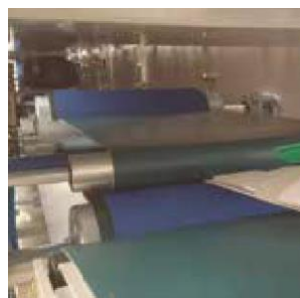
Prebreak



Crash-Lock



Lower Glue Pot (O.S.)



Press Conveyor (4.5 m)



***Batch Packer**



***Auto Glue Regulator**



***Pocket Folder**

Specification / Boomer 6

Straight line cartons

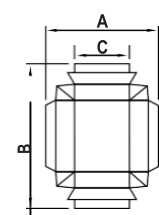
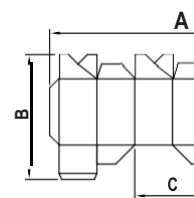
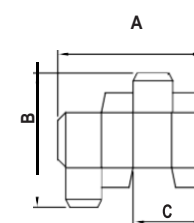
| | |
|---|---------------------------------|
| A | 60mm(2.36in) ~ 650 mm(25.6 in) |
| B | 50mm(1.96in) ~ 400 mm(15.74 in) |
| C | 23mm(0.9in) ~ 290 mm(11.41 in) |

Lock-bottom cartons

| | |
|---|----------------------------------|
| A | 125mm(4.92in) ~ 600 mm(23.62 in) |
| B | max. 400 mm(15.74in) |
| C | 60 mm(2.36 in)~ 290 mm(11.41 in) |

Double-wall cartons

| | |
|----|-------------------------------------|
| A | 100mm(3.93 in) ~ 650 mm (25.6 in) |
| B | 60mm(2.36 in) ~ 400 mm (15.74 in) |
| C. | 50mm(1.96 in) ~ 460 mm (18.11 in) |



Machine Speed

20 ~ 250 meter / minute

Carton material

200 ~ 800 gsm

N/F/E flute

* depends on the carton design

Electrical connected load

13 kVA

Space requirements

6.9 (L)(22ft) x 1.2 (W)(3.93ft) x 1.7 (H)(5.57ft) m

LENNART GROUP ,LLC Adress : 3 Germay Dr. UNIT 4 #1430 Wilmington , Delaware , 19804
 Tel : +1 (908) 952-3286 Web : www.lennartgroup.us Mail: info@lennartgroup.us
LENNART GROUP B.V : Web : www.lennartgroup.nl Mail: info@lennartgroup.nl